

BASECAMP EXPEDITIONS



aboard m/v 'Ortelius'



OCEANWIDE
EXPEDITIONS

WHY DO WE TRAVEL TO THE ARCTIC?

IT'S OUR PASSION!

We follow the explorers and reach out to the pristine and remote Polar places not only because they are on the map but to follow our passion of pioneering true ship based expedition programs for activity minded people who wish to explore the unique wildernesses of our Polar planet: an exciting mix of dramatic landscapes, rugged mountains towering the sea, fascinating glaciers and endless ice, close wildlife encounters and the true feel of history.

Basecamp – Our activity base

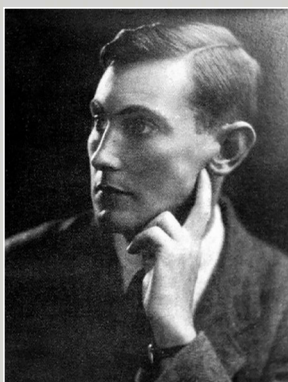
The ship becomes our base camp on selected dates. "Base camp" is by definition a temporary storing and starting place, from which an activity starts. On selected voyages (see dates & rates) we offer "activity modules" which go beyond our normal shore program. The vessel will stay for two or three days at specific locations to serve our active passengers as a comfortable hub to allow more time than usual for wide rang-

ing activities: hikers to participate in long walks, photographers to explore photo opportunities, kayakers and zodiac passengers to explore near shores where the ship cannot go. Passengers who do not wish to become physically active will enjoy our zodiac excursions and follow the normal shore program and land

excursions (easy to moderate walks and hikes with focus on wildlife). We aim for visiting active and manned research stations in the Arctic.



“Our philosophy:
WE KEEP SEA DAYS AS SHORT AS POSSIBLE IN ORDER
TO SPEND AS MUCH TIME AS POSSIBLE ASHORE.”



“Because it’s there”

George Mallory (1886-1924)

George Mallory, an English mountaineer, who took part in the first three British expeditions to Mount Everest in the early 1920s was once famously quoted as having replied to the question “Why do you want to climb Mount Everest?” with the retort: “Because it’s there”. These are regarded as the most famous three words in mountaineering.

BASECAMP

OUR ACTIVITIES



“Basecamp” emphasis is on activities, including: zodiac excursions, hiking, kayaking, and photo shooting. All activities will be conducted by trained expert guides. All adventure activities are free of charge on “Basecamp” voyages and are included in the package. On our regular voyages, activities can be booked as specialized standalone modules. These modules are supplemented by a fee. Please refer to “Basecamp” dates and activity codes on our regular voyages in the dates & rates. Please be aware that the availability of activities always depends on safe weather and ice conditions.

Basecamp – Our guides

An international team of Polar experts and field guides is enthusiastic about sharing their in depth knowledge with lectures, briefings and field excursions. Lectures are selected and relevant to the destinations we travel to. We cover major topics like marine biology, geography, geology, glaciology, ornithology and history. Our staff is skilled, trained and qualified in the activity they are in charge of: pho-

tography, kayaking, zodiac driving, guarding against polar bears. Expedition guides deliver the informative ship program and actively guide our shore excursions in different languages.

Rubber Boots

We keep a wide variety of rubber boots on board for our guests to use free of charge. If you need an unusual size or have specific



requirements, please contact your travel agent or Oceanwide Expeditions. Our rubber boots are of high quality and will keep your feet dry, warm, and comfortable during all landings.



ZODIAC CRUISING & SHORE PROGRAM

This is our core activity: guided shore excursions, walks and wildlife spotting and zodiac cruises are included in the fare and will be offered to all passengers during the voyages.

Our voyages are primarily defined as explorations and we spend as much time ashore as possible. We can be flexible, taking advantage of wildlife opportunities by using our zodiacs for both landings and cruises. Our knowledgeable guides assist on these outings, providing detailed information. This is supplemented by lectures on board which covers topics such as wildlife, history and glaciology.

On Basecamp voyages we offer a variety of activities (see hereunder), but participation is not obligatory.

- Kayaking
- Photo workshops
- Snowshoeing / Hiking



KAYAKING

We plan to offer 3-4 days of kayak excursions parallel to all other activities (6-7 outings morning, afternoon or evening) during designated “Basecamp” voyages.

Basic kayak experience, appropriate outdoor clothing and physical fitness is essential. The maximum number is limited to 14 kayakers per outing.

Special kayak gear will be provided: single seat and double seat kayaks, neoprene wet suits, life vests. Kayakers will bring their personal warm and protective clothes. An expedition kayak guide will supervise the activity. The kayakers will be accompanied by a safety zodiac boat.

Basecamp voyage:

1 kayak excursion free of charge. Every passenger will be able to take advantage of at least 1 outing.



Kayaking must be pre-booked with Oceanwide's reservation departments prior to departure (maximum 1 outing for Basecamp Ortelius).



PHOTO WORKSHOP

During “Basecamp” voyages we are going to offer photo workshops for beginners and advanced photographers under the supervision of a photo expert on board.

Everyone is welcome to participate, no previous experience required. The workshop group will be accompanied by the photo expert during activity ashore. The maximum participants per photo workshop is aimed at 20 participants per outing per guide, so maximum attention can be paid to individuals. The work shop group will be taken on shore excursions whenever opportunities arise. Participants with a special interest in photography can bring their personal photo equipment.

During cruise days everyone will be able to listen into photo lectures in order to learn more about objects, exposures and photo composition. The workshop intention is not to instruct on how to use specific camera models, but more to give an insight on better photo results by respecting basic rules of photography. Photographers can also take part in other activities of their choice.

Basecamp voyage:

Photo workshops are free of charge. The group size per outing is limited to 20 participants. Please note, we do not supply any photography equipment.



The photo workshop must be pre-booked with Oceanwide's reservation departments prior to departure.



SNOWSHOEING/HIKING

We plan to offer several possibilities to become active ashore. There will be easy, moderate and more demanding walks on offer in the vicinity of the landing sites.

There are walks on offer which suit everyone's capability. In the Arctic we offer several long walks of up to 3-4 hours. Hikers are recommended to bring a proper pair of hiking boots and gaiters. Rubber boots suitable for hiking will be provided. Hikes will be guided by experienced expedition guides.

Snowshoeing:

Especially on early departures at the beginning of the season there are still snow covered hills and mountains further inland (North Spitsbergen) and close to shore. Snowshoes are easy to use and don't require any technical skills. They make it easier and safer to walk on snow surfaces. They are available free of charge for everyone on board, fit all boot sizes and can be used in combination with the Oceanwide rubber boots.

Basecamp voyage:

The activity is free of charge.



Snowshoeing/hiking must be pre-booked with Oceanwide's reservation departments prior to departure.



POLAR BEAR: ICON OF THE ARCTIC

A highlight of traveling to the Arctic is seeing one or more polar bears, terrifying and majestic creatures that are as emblematic of the region as icebergs and glaciers.

We most often see polar bears on shore and on the sides of mountains, though they are technically marine mammals.

For safety reasons, we will not carry out activities if we see a bear nearby. We will, however, do our best to view the polar bear (and if we are lucky, more than one) safely while also not disturbing them.

Polar bears are excellent swimmers and can swim continuously for days, covering vast distances in water as well as on ice and land.

They can weigh up to 800 kg (1,750 pounds) and stand on their hind legs up to three meters (9.8 feet) tall.



WALRUS: TOOTH-WALKING SEA HORSE

There is a good chance we will see Atlantic walrus on our Arctic voyages. Depending on the itinerary and local conditions, we may even try to visit their shoreline haul-out sites.

This iconic Arctic species is a treat to see as they move through the water and congregate on shore, dozing next to and even on top of each other.

These gentle giants can eat up to 60% of their own body weight per day and grow up to 1500 kg (3,300 pounds).

The walrus diet is made up mainly of clams and mollusks, which they can locate with their whiskers in murky water.

Walrus tusks can grow up to one meter (three feet) long and are used to haul themselves onto the ice. They can also be used for protection, and males may also use them for fighting during the breeding season.

ACTIVITY GROUP SELECTION PROCESS

The order in which passengers can choose their activity time slots corresponds directly to their date of booking with Oceanwide Expeditions. In other words, passengers whose trip payment dates (i.e., date of booking) are earliest get first choice in terms of when they want to do their activities. We do not prioritize or “bump up” activity groups due to weather cancellations.

In the event of cancellations due to unsafe ice and/or weather conditions:

- You will be moved to another activity time slot as circumstances allow.
- If there are less time slots than passenger groups, the first group cancelled gets priority for the next available activity time slot.

With regard to passenger groups, the procedures outlined below will be followed:

- Initial groups of 20 passengers (six groups total, labeled A - F) will be formed based on their date of booking. (Passengers who booked earliest will be in group A, later bookers in group B, and so forth.)
- Briefings on the activities will be held for you in the lounge or lecture room.
- After you have been fully briefed, you will be called by group to the observation lounge (starting with group A) and assembled into final activity groups / sessions by our specialized activity leaders. Some activities, such as mountaineering or kayaking, offer a more specific experience with regard to terrain, equipment, and location. In this case, your expedition guides will give you advice to help you choose a time slot for your activity.

Terms and conditions

All travel elements relating to staying on board the vessel and/or excursions or programs off the ship (such as but not limited to excursions or programs on land, including zodiac excursions) are at 100% at passenger's own risk. Oceanwide Expeditions is therefore not liable for any damage, such as but not limited to (bodily) injury, illness and death except for gross negligence. On all our transactions the general terms and conditions of Oceanwide Expeditions b.v. apply, registered at the Chamber of Commerce, Middelburg, the Netherlands.

File nr.: 50590715. Upon request, a free copy will be provided.

WWW.OCEANWIDE-EXPEDITIONS.COM

CONTACT & BOOKING INFORMATION

Oceanwide Expeditions | Head Office

Visserijkade 5 • 4382 ZA Vlissingen • The Netherlands
T +31 (0) 118 410 410 **F** +31 (0) 118 410 417
E info@oceanwide-expeditions.com

Oceanwide Expeditions | USA & Canada Office

14950 Heathrow Forest Parkway, Suite 560 • Houston, TX 77032 • USA
T +1 800 453 7245 or +1 281 741 2372 **F** +1 281 749 8220
E usa@oceanwide-expeditions.com

